



Purpose

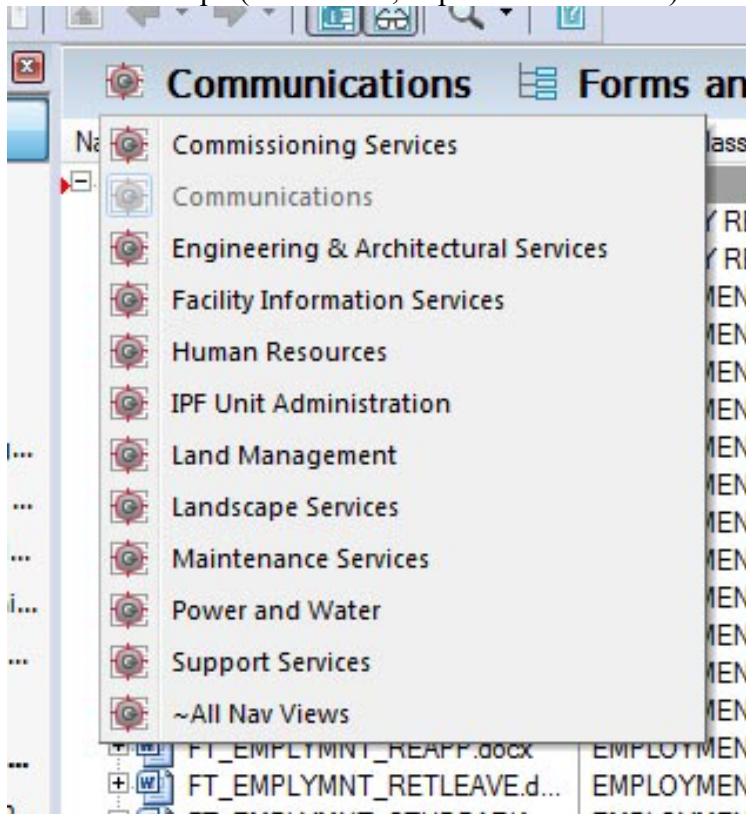
Various IPF departments are moving toward using Meridian Document Management System to store their documents in place of using network drives. Utilizing a document management system ensures that users are always accessing the most recent version of a file, but older versions are saved for reference if needed. In addition, the system cuts out a middle step for putting documents online once they are updated. Files are pulled directly from Meridian instead of needing to be saved to the web server for viewing and each time a file is updated in Meridian, it will automatically update on the external webpage.

Procedure

1. Open Meridian (BC-Meridian power User).



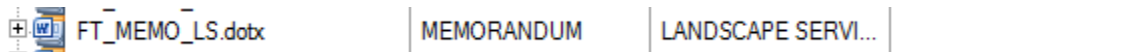
2. Choose the scope (in this case, department or office).



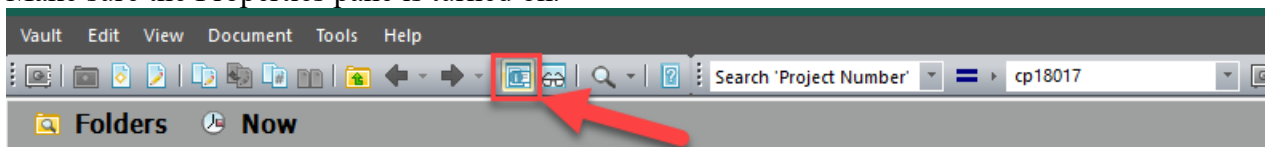
3. Choose the Nav View.



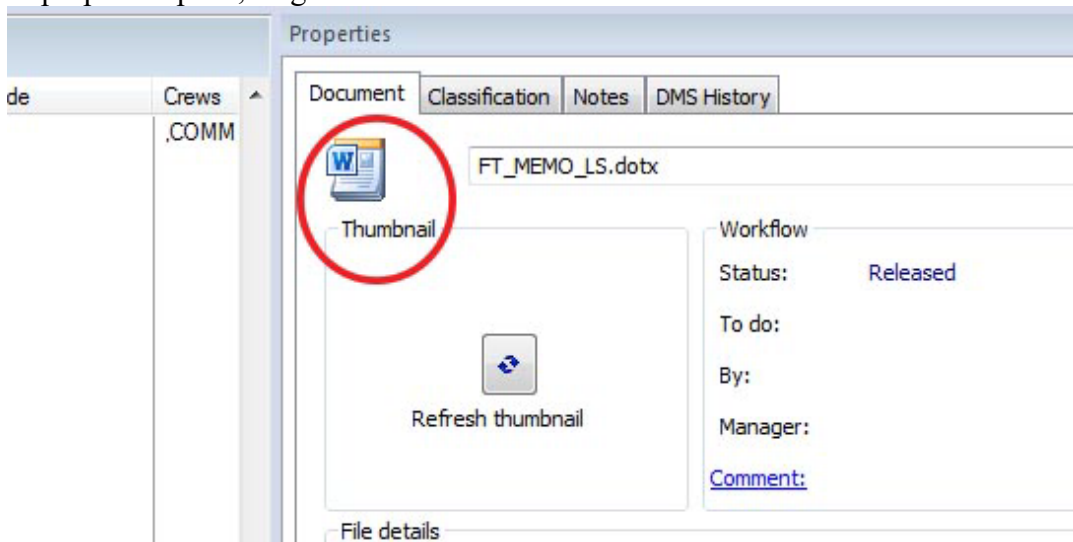
4. Find the document you want to link.



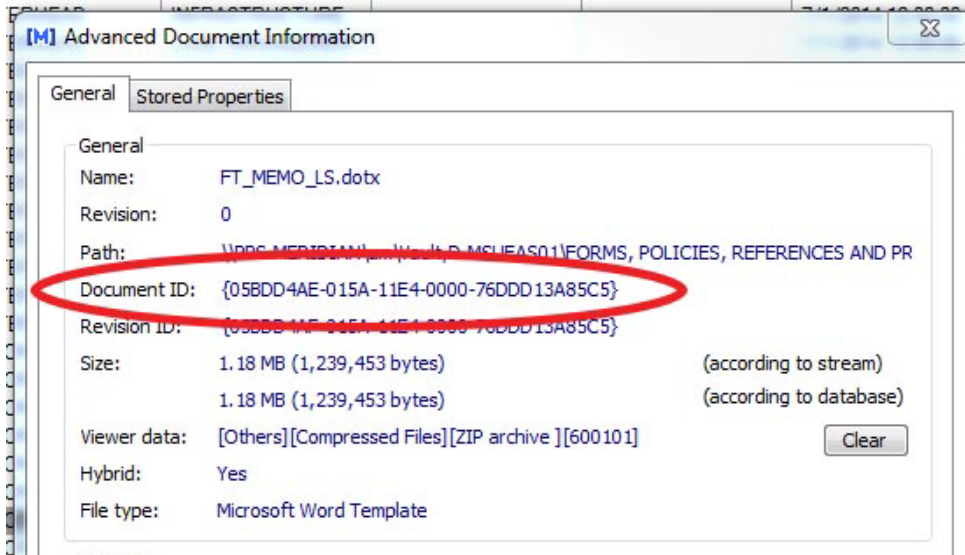
5. Make sure the Properties pane is turned on.



6. In the properties pane, single-click on the document icon above the thumbnail.



7. A window will open. Locate the Document ID. This is the piece of information you will need to link to the document.



8. Use the following link as a model:

<https://api.gis.msu.edu/edms/file/{A9A59203-3935-11EA-0000-76DDD13A85C5}>

9. After [/files/](#), paste the document ID you copied from Meridian.
10. Copy the link you just created and paste it into the external website or document you are linking this document to.
11. Once the link is published and live on a site, clicking the link will not open a new page on the website, but may open a dialogue box asking if the user wishes to open or save the document then the document will open in the native application.

Revision History and Owner of Document

Created: 2016

Updated: ~~January 2020~~ January 2023

FIS Support | 517-353-3434 | fissupport@ipf.msu.edu